

King's Moat

BASCHURCH



King's Moat Baschurch, Shropshire

DISCOVER YOUR NEW HOME

King's Moat is an exceptional collection of luxury homes situated on Station Road in the centre of Baschurch. This vibrant Shropshire village offers a delightful rural lifestyle with an abundance of nature and local beauty spots to explore, plus a wide range of amenities and attractions nearby.

Come with us to discover your new home in the heart of the village.





Baschurch & surrounding areas

VILLAGE LIFE

King's Moat is a development of new homes in Baschurch, a picturesque village in the heart of the Shropshire countryside. Located just 8 miles from Shrewsbury, with its wide range of independent shops, restaurants and leisure facilities, Baschurch is the perfect place to call home.

These 2, 3 and 4-bedroom homes will appeal to first-time buyers, families and professionals, offering an easy commute to Shrewsbury, Birmingham and beyond.

There is a range of village amenities on the doorstep, including a convenience store, two pubs, a post office and doctor's surgery. Locally acclaimed farm shop Moor Farm and Shrewsbury Polo Club are a real draw to the village, with events held throughout the year.

The two village schools are within walking distance of King's Moat: Baschurch C E Primary School and the Corbet School, both of which have a good Ofsted rating. The independent schools Packwood Haugh and Adcote School for Girls are both within a 10-minute drive.





Welcome to King's Moat



A RELAXED WAY OF LIFE

King's Moat is a luxury collection of 2-4 bedroom houses and bungalows. With 14 unique house types, offering a range of interior layouts and configurations, there is sure to be a home to suit you.

Our homes are carefully and thoughtfully designed, featuring generous plot sizes and plenty of green, open spaces. They are low maintenance and highly efficient, built to the latest in building excellence standards. Blending traditional exteriors with stylish and contemporary interiors, the homes at King's Moat offer the very best for modern family life.

King's Moat

SITE PLAN



Alwen	Tweed	Burwell / Swindale	Roeburn	Roeburn	Witham	Winster	Tetbury	Clyde	Hertford	Stretford	Sherbourne	Tamar
2 bedroom semi-detached bungalow	2 bedroom semi-detached house	3 bedroom semi-detached house	3 bedroom detached house	3 bedroom semi-detached house	3 bedroom detached house	3 bedroom detached house	3 bedroom detached house	3 bedroom detached bungalow	3 bedroom detached house	4 bedroom detached house	4 bedroom detached house	4 bedroom detached house



The Alwen

2 BEDROOM BUNGALOW



DIMENSIONS

Ground Floor

Living	3.82m x 4.00m	12' 6" x 13' 1"
Kitchen / dining	2.76m x 3.72m	10' 0" x 12' 2"
Bedroom 1	3.00m x 3.88m	9' 10" x 12' 8"
En suite	1.47m x 2.59m	4' 10" x 8' 3"
Bedroom 2	2.72m x 3.51m	8' 11" x 11' 6"
Bathroom	1.47m x 2.59m	4' 10" x 8' 3"



Ground Floor



The Tweed

2 BEDROOM SEMI-DETACHED



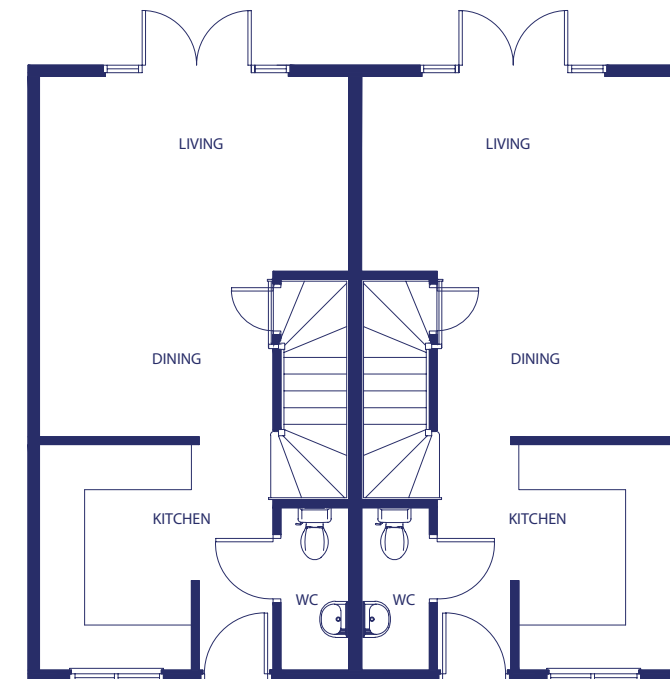
DIMENSIONS

Ground Floor

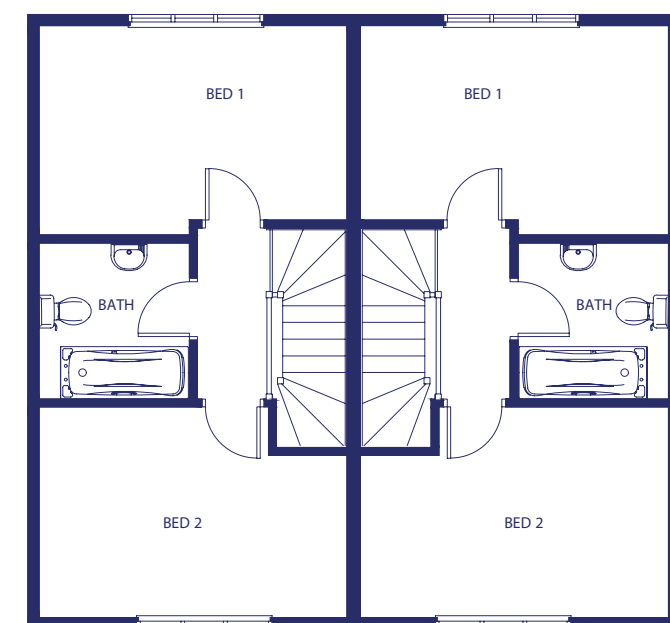
Living / dining	4.11m x 4.79m	13' 5" x 15' 8"
Kitchen	2.21m x 3.00m	7' 3" x 9' 10"
Cloakroom	0.90m x 2.16m	2' 11" x 7' 1"

First Floor

Bedroom 1	2.79m x 4.11m	9' 1" x 13' 5"
Bedroom 2	2.81m x 4.11m	9' 2" x 13' 5"
Bathroom	2.00m x 2.08m	6' 6" x 6' 9"



Ground Floor



First Floor



The Burwell

3 BEDROOM SEMI-DETACHED



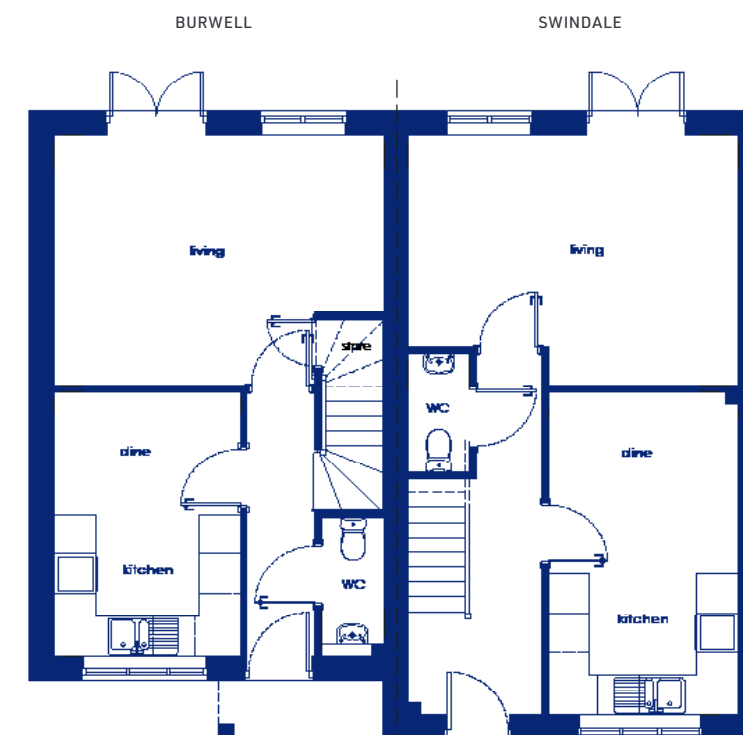
DIMENSIONS

Ground Floor

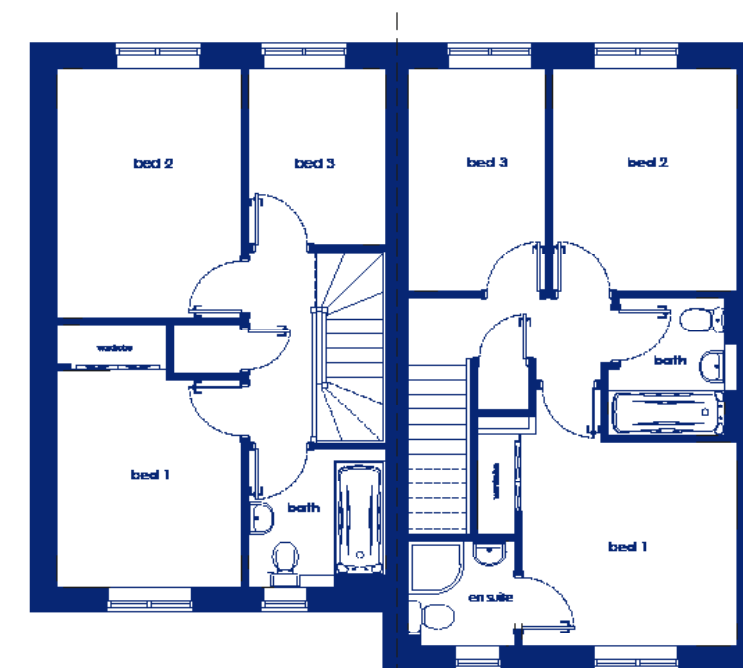
Living	3.32m x 5.00m	10' 11" x 16' 5"
Kitchen / dining	3.41m x 5.53m	11' 3" x 18' 2"
Cloakroom	0.90m x 2.10m	2' 11" x 6' 11"

First Floor

Bedroom 1	3.36m x 3.41m	11' 0" x 11' 2"
En suite	1.20m x 2.40m	3' 11" x 7' 11"
Bedroom 2	3.36m x 3.78m	11' 0" x 12' 5"
Bedroom 3	2.08m x 2.69m	6' 10" x 8' 10"
Bathroom	2.08m x 2.10m	6' 10" x 6' 11"



Ground Floor



First Floor



The Swindale

3 BEDROOM SEMI-DETACHED



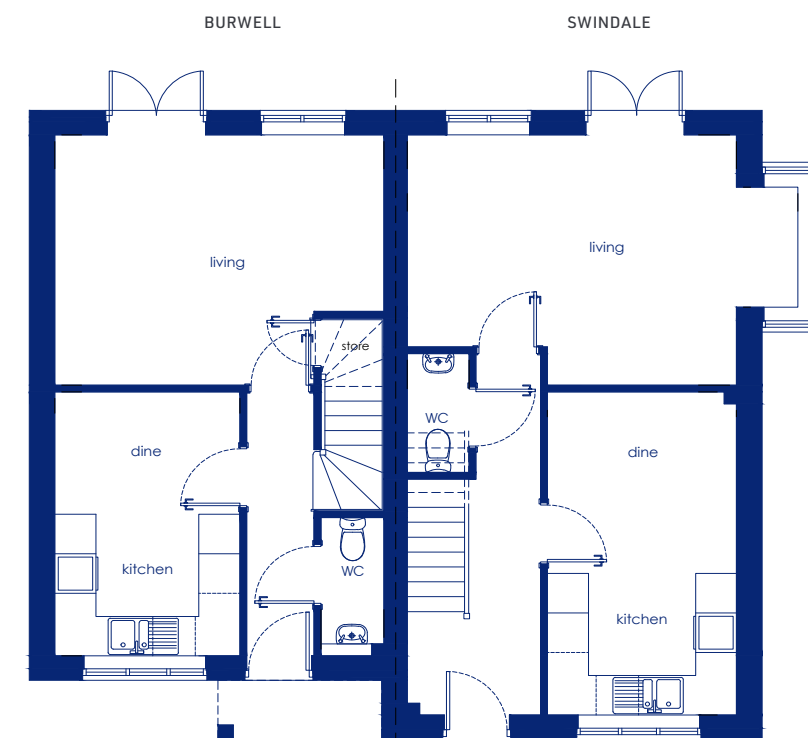
DIMENSIONS

Ground Floor

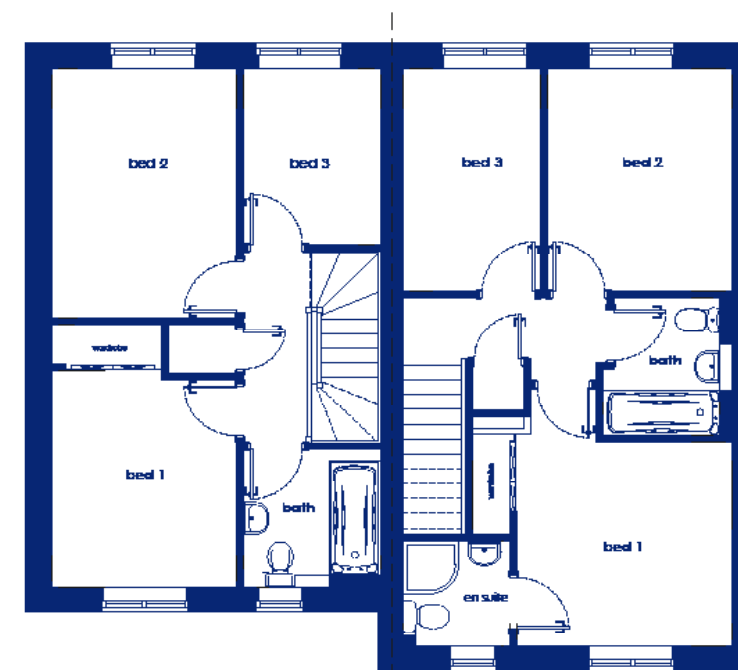
Living	3.80m x 4.79m	12' 5" x 15' 8"
Kitchen / dining	2.75m x 4.90m	9' 1" x 16' 1"
Cloakroom	0.90m x 1.80m	2' 11" x 5' 11"

First Floor

Bedroom 1	3.10m x 3.14m	10' 2" x 10' 3"
En suite	1.55m x 1.60m	5' 1" x 5' 2"
Bedroom 2	2.69m x 3.40m	8' 10" x 11' 1"
Bedroom 3	2.00m x 3.40m	6' 6" x 11' 1"
Bathroom	1.88m x 2.10m	6' 2" x 6' 10"



Ground Floor



First Floor



The Roeburn

3 BEDROOM DETACHED + GARAGE



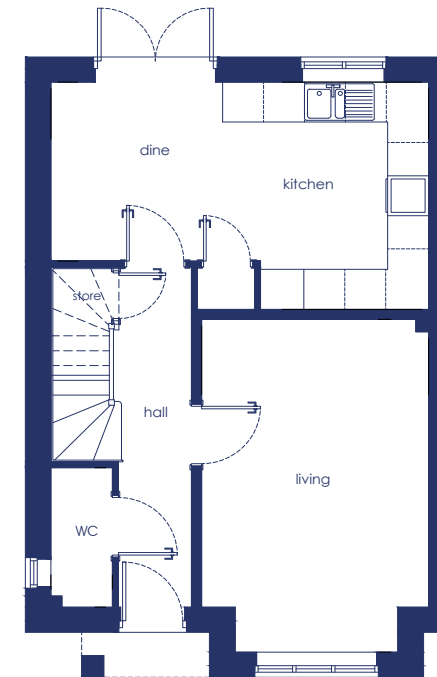
DIMENSIONS

Ground Floor

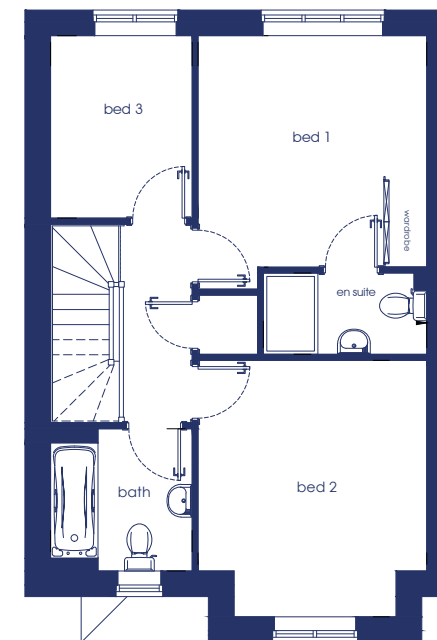
Living	3.32m x 5.00m	10' 11" x 16' 5"
Kitchen / dining	3.41m x 5.53m	11' 3" x 18' 2"
Cloakroom	0.90m x 2.10m	2' 11" x 6' 11"

First Floor

Bedroom 1	3.36m x 3.41m	11' 0" x 11' 2"
En suite	1.20m x 2.40m	3' 11" x 7' 11"
Bedroom 2	3.36m x 3.78m	11' 0" x 12' 5"
Bedroom 3	2.08m x 2.69m	6' 10" x 8' 10"
Bathroom	2.08m x 2.10m	6' 10" x 6' 11"



Ground Floor



First Floor



The Roeburn

3 BEDROOM SEMI-DETACHED



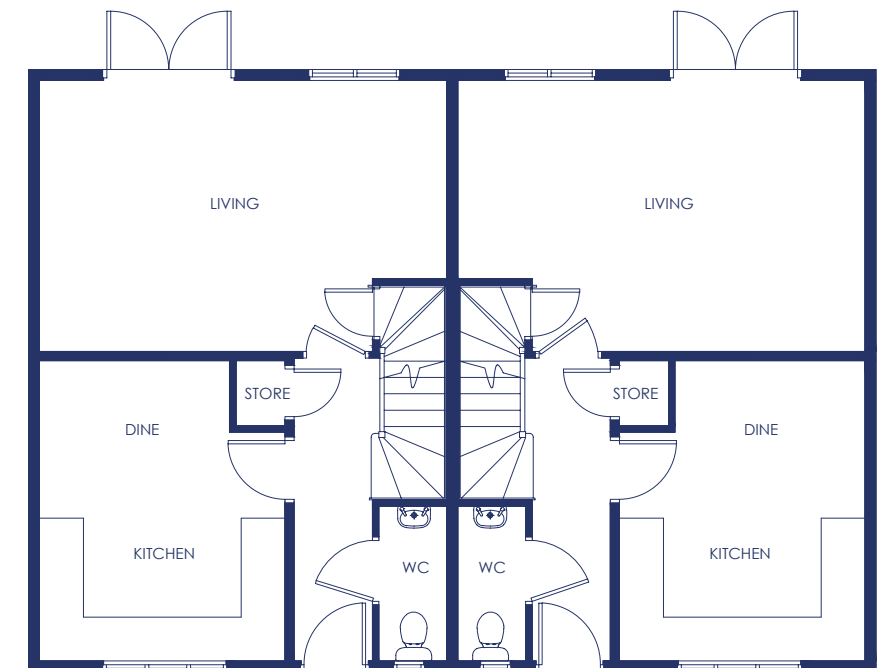
DIMENSIONS

Ground Floor

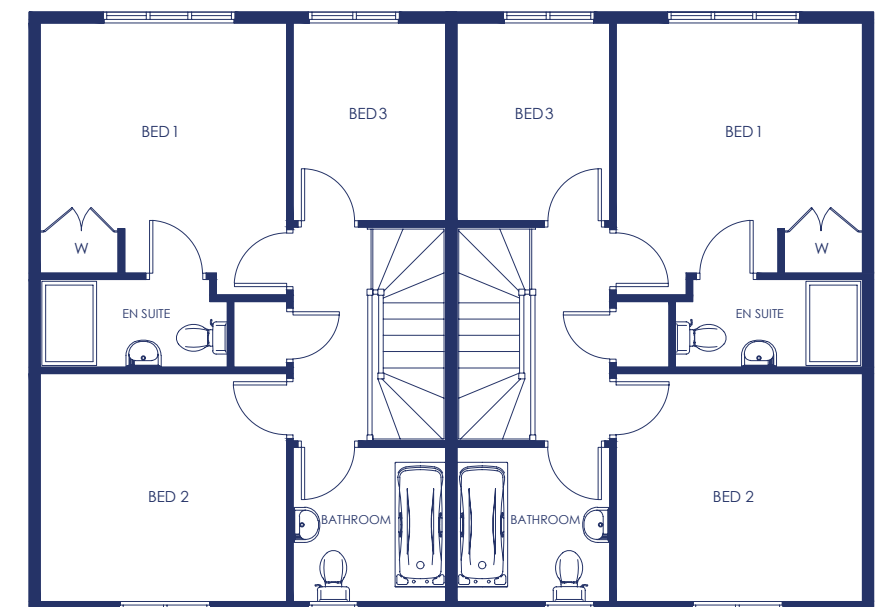
Living	3.70m x 5.56m	12' 1" x 18' 2"
Kitchen / dining	3.35m x 4.10m	10' 11" x 13' 5"
Cloakroom	0.93m x 2.11m	3' 0" x 6' 11"

First Floor

Bedroom 1	3.37m x 3.72m	11' 0" x 12' 2"
En suite	1.20m x 2.56m	3' 11" x 8' 4"
Bedroom 2	3.12m x 3.37m	10' 2" x 11' 0"
Bedroom 3	2.09m x 2.70m	6' 10" x 8' 10"
Bathroom	2.09m x 2.11m	6' 10" x 6' 11"



Ground Floor



First Floor



The Witham

3 BEDROOM DETACHED + GARAGE



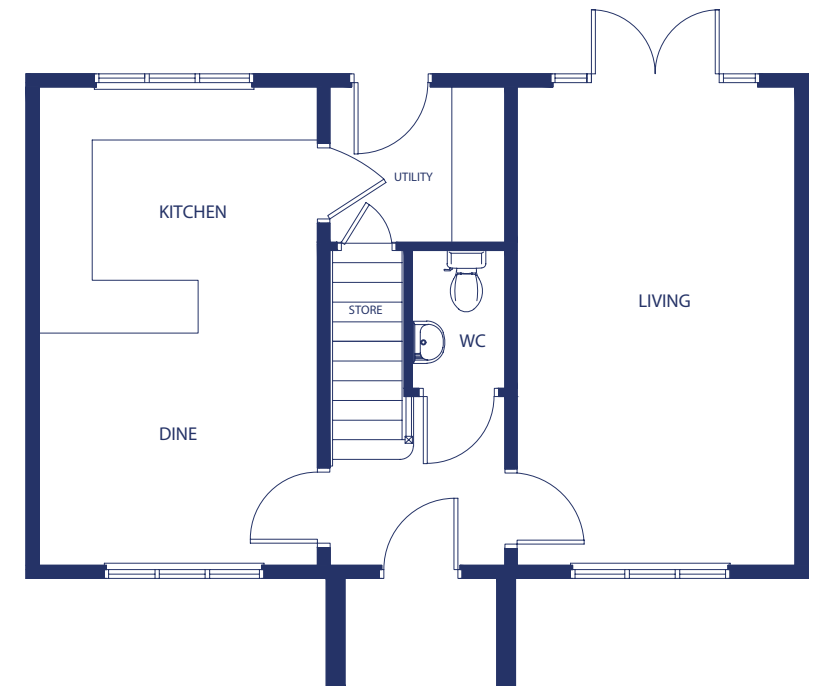
DIMENSIONS

Ground Floor

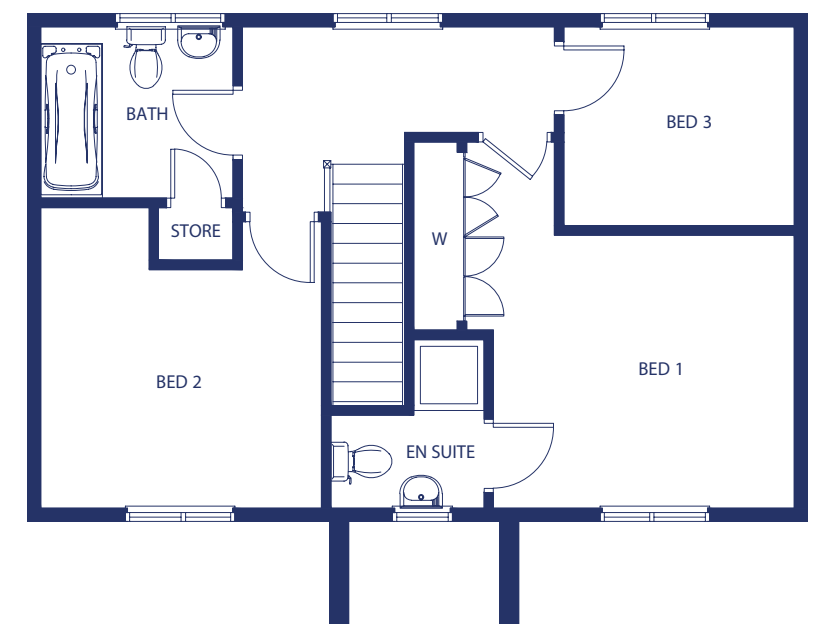
Living	3.15m x 5.42m	10'4" x 17'9"
Kitchen / dining	3.15m x 5.42m	10'4" x 17'9"
Utility	1.76m x 1.98m	5'9" x 6'5"
Cloakroom	1.05m x 1.56m	3'5" x 5'1"

First Floor

Bedroom 1	3.10m x 3.42m	10'2" x 11'2"
En suite	1.82m x 1.98m	5'11" x 6'7"
Bedroom 2	3.19m x 3.37m	10'5" x 11'0"
Bedroom 3	2.25m x 2.62m	7'4" x 8'7"
Bathroom	2.0m x 2.21m	6'6" x 7'3"



Ground Floor



First Floor



The Winster

3 BEDROOM DETACHED + GARAGE



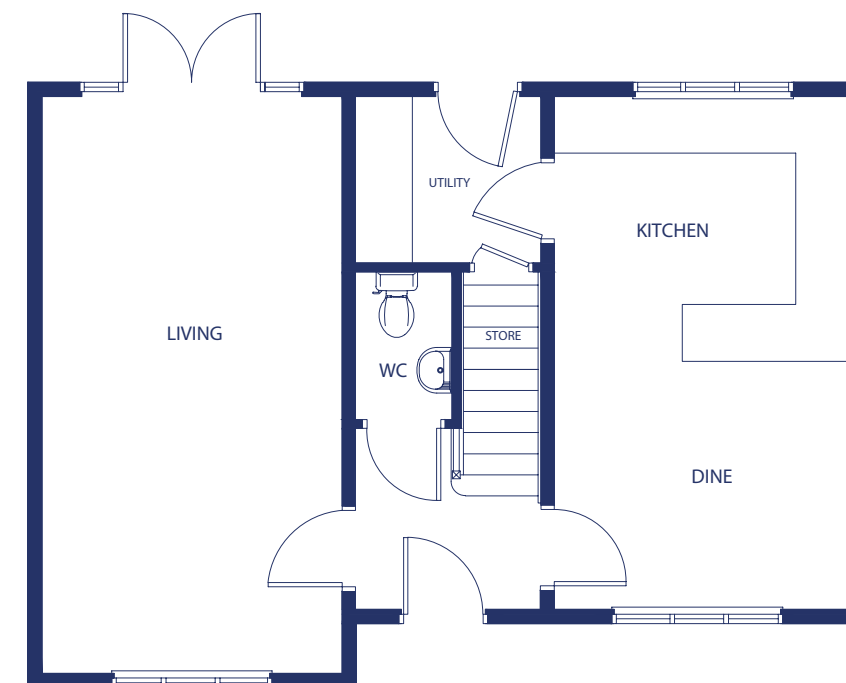
DIMENSIONS

Ground Floor

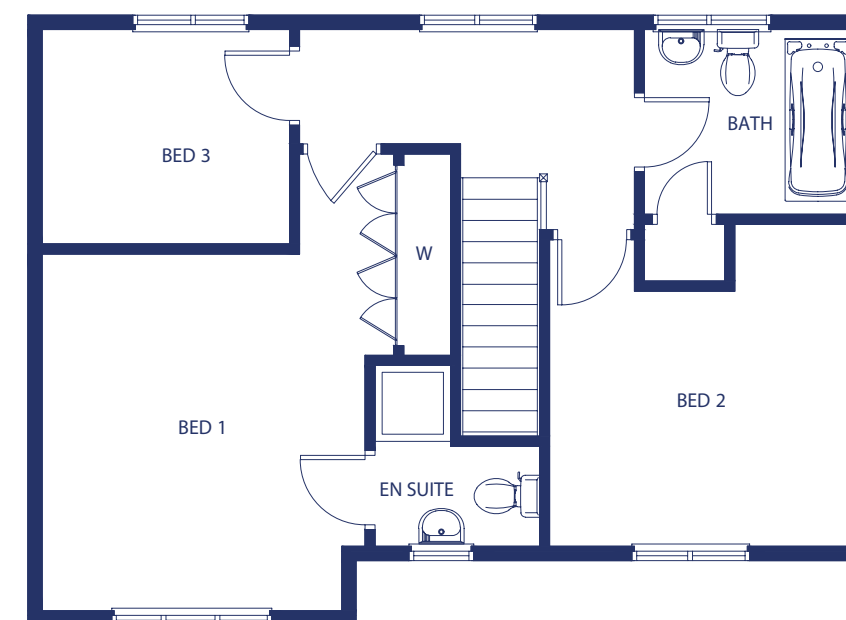
Living	3.17m x 6.09m	10' 4" x 19' 11"
Kitchen / dining	3.15m x 5.42m	10' 4" x 17' 9"
Utility	1.76m x 1.96m	5' 9" x 6' 5"
Cloakroom	1.02m x 1.56m	3' 4" x 5' 1"

First Floor

Bedroom 1	3.42m x 3.74m	11' 2" x 12' 3"
En suite	1.86m x 1.99m	6' 1" x 6' 6"
Bedroom 2	3.19m x 3.37m	10' 5" x 11' 0"
Bedroom 3	2.25m x 2.62m	7' 4" x 8' 7"
Bathroom	1.94m x 2.19m	6' 4" x 7' 2"



Ground Floor



First Floor



The Tetbury

3 BEDROOM DETACHED + GARAGE



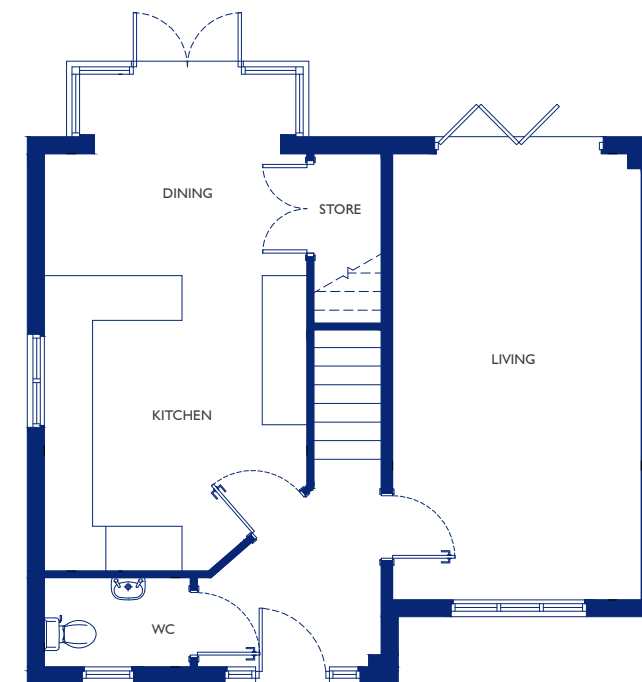
DIMENSIONS

Ground Floor

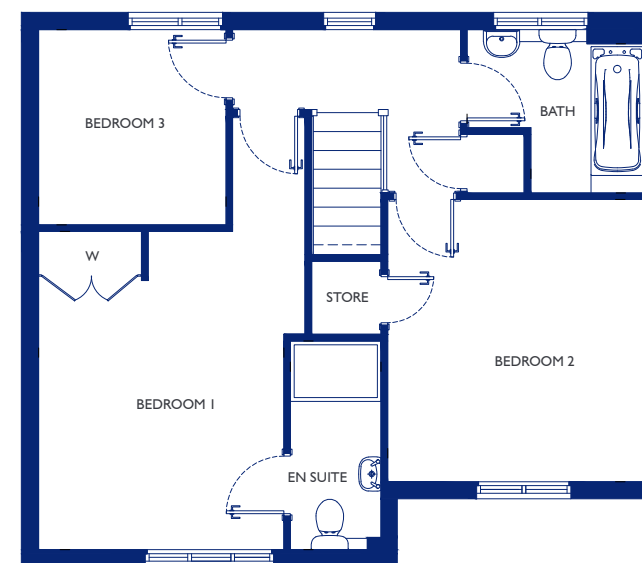
Living	3.34m x 5.99m	10' 11" x 19' 8"
Kitchen / dining	3.52m x 5.60m	11' 7" x 18' 4"
Cloakroom	1.19m x 1.96m	3' 11" x 6' 5"

First Floor

Bedroom 1	3.25m x 4.21m	10' 8" x 13' 10"
En suite	1.20m x 2.76m	3' 11" x 9' 1"
Bedroom 2	3.38m x 3.73m	11' 1" x 12' 3"
Bedroom 3	2.48m x 2.58m	8' 2" x 8' 6"
Bathroom	1.49m x 2.33m	4' 11" x 7' 8"



Ground Floor



First Floor



The Clyde

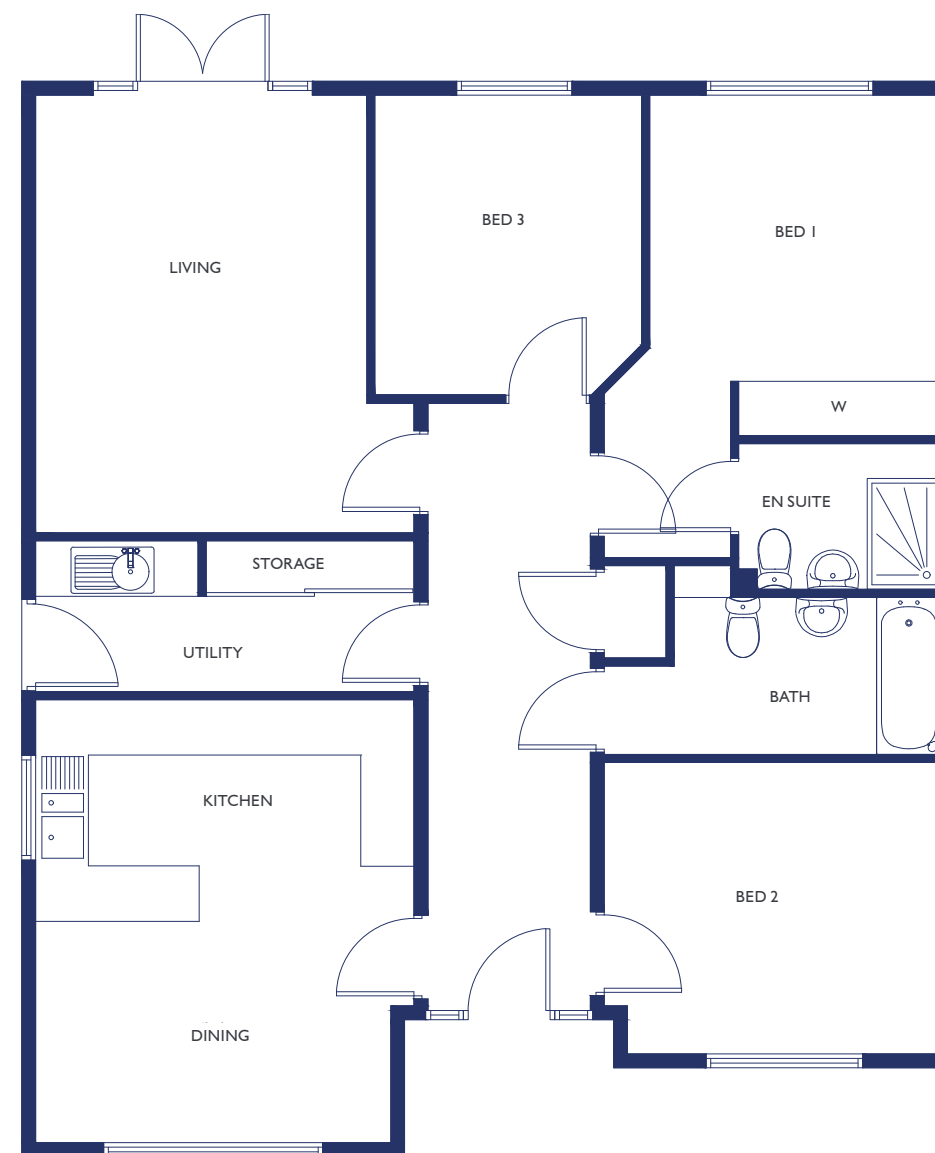
3 BEDROOM BUNGALOW



DIMENSIONS

Ground Floor

Living	3.58m x 4.74m	11' 9" x 15' 6"	Bedroom 1	2.97m x 3.15m	9' 9" x 10' 4"
Kitchen /dining	4.09m x 4.79m	13' 5" x 15' 8"	En suite	1.58 m x 2.19m	5' 2" x 7' 2"
Utility	1.63m x 4.12m	5' 4" x 13' 6"	Bedroom 2	3.15m x 3.65m	10' 4" x 11' 11"
			Bedroom 3	2.90m x 3.25m	9' 6" x 10' 7"
			Bathroom	1.70 m x 3.65m	5' 6" x 11' 11"



Ground Floor



The Hertford

4 BEDROOM DETACHED



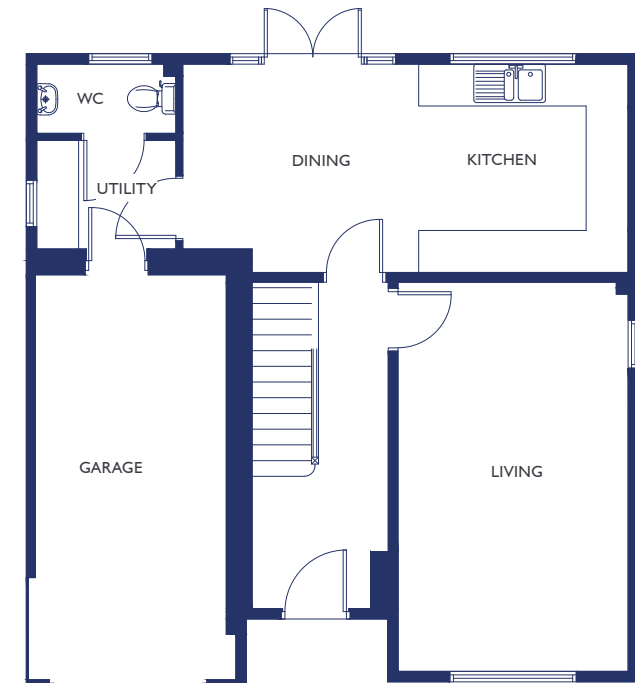
DIMENSIONS

Ground Floor

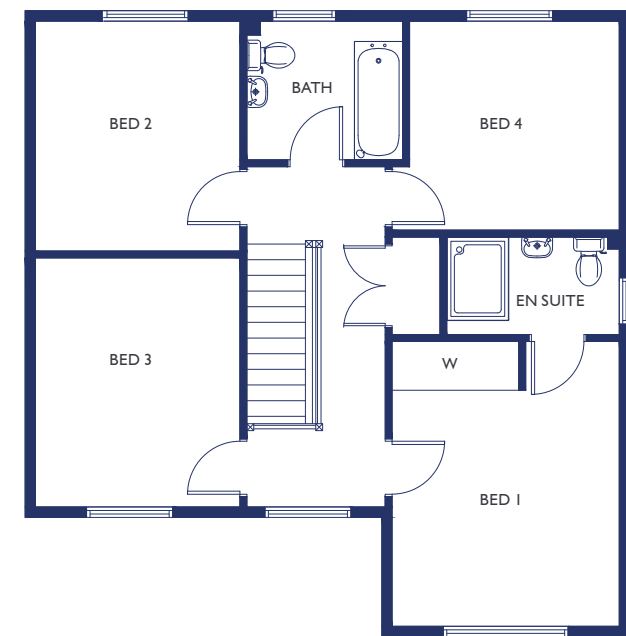
Living	3.29m x 5.57m	10' 9" x 18' 3"
Kitchen / dining	2.98m x 6.37m	9' 9" x 20' 11"
Utility	1.55m x 1.99m	5' 1" x 6' 6"
Cloakroom	0.99m x 1.99m	3' 3" x 6' 6"
Garage	2.73m x 5.79m	8' 11" x 19' 1"

First Floor

Bedroom 1	3.29m x 4.09m	10' 9" x 13' 5"
En suite	1.40m x 2.50m	4' 7" x 8' 2"
Bedroom 2	2.96m x 3.30m	9' 8" x 10' 10"
Bedroom 3	2.96m x 3.57m	9' 8" x 11' 9"
Bedroom 4	3.00m x 3.04m	9' 10" x 9' 12"
Bathroom	1.99m x 2.26m	6' 6" x 7' 4"



Ground Floor



First Floor



The Stretford

4 BEDROOM DETACHED + GARAGE



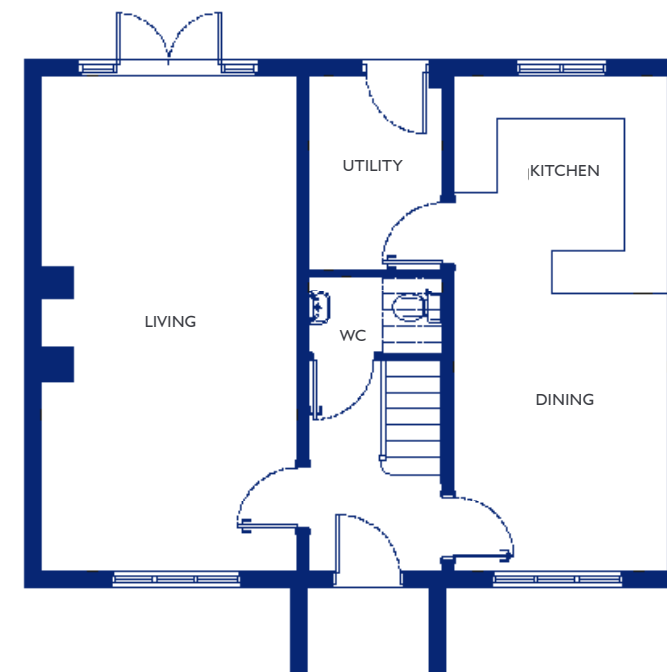
DIMENSIONS

Ground Floor

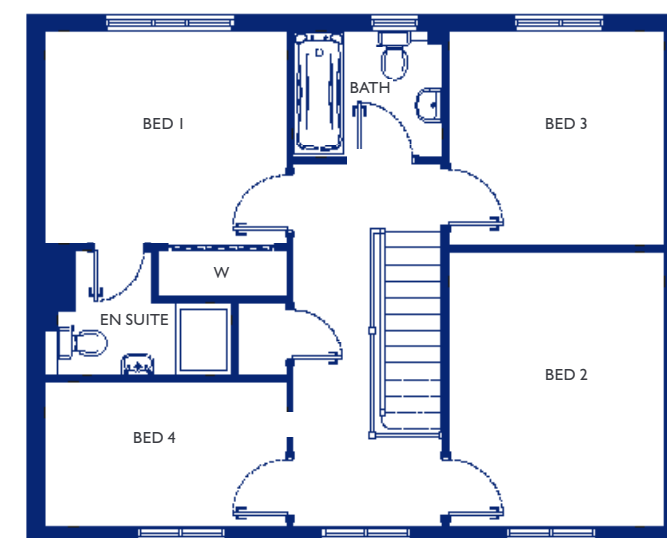
Living	3.55m x 6.88m	11' 8" x 22' 7"
Kitchen / dining	2.97m x 6.88m	9' 9" x 22' 7"
Utility	1.86m x 2.69m	6' 1" x 8' 10"
Cloakroom	1.07m x 1.86m	3' 6" x 6' 1"

First Floor

Bedroom 1	2.99m x 3.40m	9' 10" x 11' 2"
En suite	1.71m x 2.45m	5' 8" x 8' 0"
Bedroom 2	3.02m x 3.78m	9' 11" x 12' 5"
Bedroom 3	3.01m x 3.02m	9' 10" x 9' 11"
Bedroom 4	1.99m x 3.39m	6' 7" x 11' 2"
Bathroom	1.76m x 2.08m	5' 9" x 6' 10"



Ground Floor



First Floor



The Sherbourne

4 BEDROOM DETACHED + GARAGE



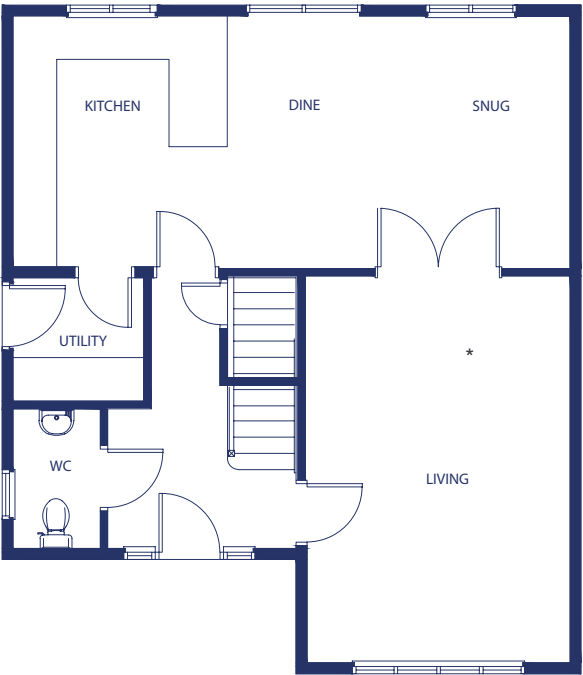
DIMENSIONS

Ground Floor

Living	3.62m x 5.31m	11' 10" x 17' 5"
Kitchen / dining	7.67m x 3.46m	25' 1" x 11' 4"
Utility	1.70m x 1.80m	5' 6" x 5' 10"
Cloakroom	1.22m x 1.89m	4' 0" x 6' 2"

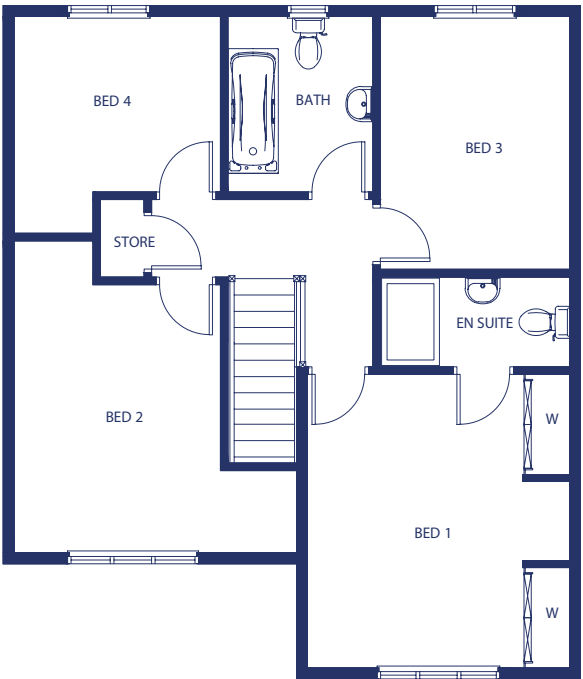
First Floor

Bedroom 1	3.63m x 4.01m	11' 10" x 13' 1"
En suite	1.22m x 2.61m	4' 0" x 8' 6"
Bedroom 2	3.90m x 4.26m	12' 9" x 13' 11"
Bedroom 3	2.61m x 3.46m	8' 6" x 11' 4"
Bedroom 4	2.85m x 2.96m	9' 4" x 9' 8"
Bathroom	2.00m x 2.40m	6' 6" x 7' 10"



Ground Floor

* Glazed doors optional extra



First Floor



The Tamar

4 BEDROOM DETACHED + GARAGE



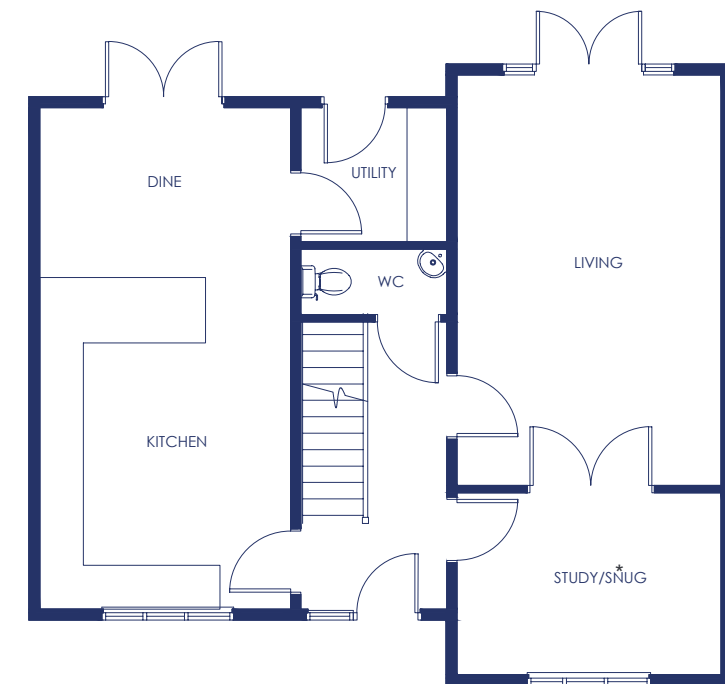
DIMENSIONS

Ground Floor

Living	3.64m x 5.65m	11' 11" x 18' 6"
Kitchen / dining	3.45m x 6.89m	11' 3" x 22' 7"
Snug / study	3.64m x 2.51m	11' 11" x 8' 2"
Utility	1.84m x 2.00m	6' 0" x 6' 6"
Cloakroom	0.90m x 2.00m	2' 11" x 6' 6"

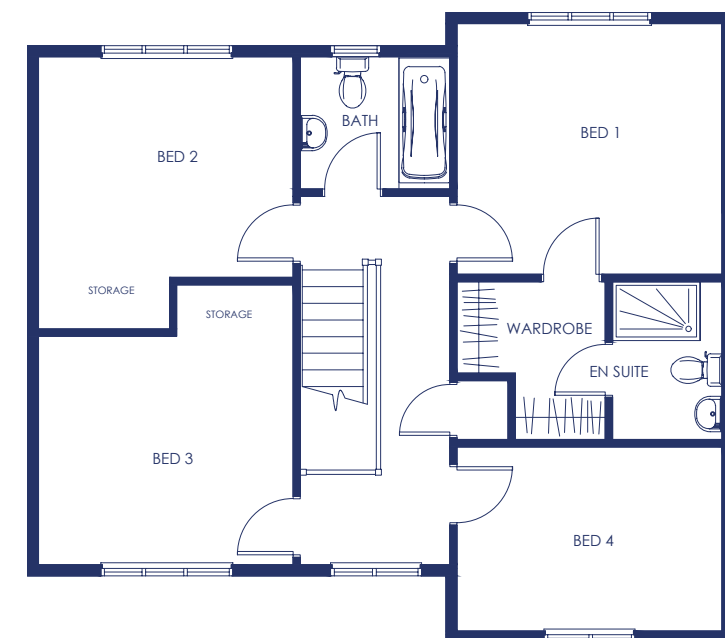
First Floor

Bedroom 1	3.40m x 3.63m	11' 1" x 11' 10"
En suite	1.50m x 2.14m	4' 11" x 7' 0"
Bedroom 2	3.49m x 3.69m	11' 5" x 12' 1"
Bedroom 3	3.49 x 3.80m	11' 5" x 12' 5"
Bedroom 4	2.50m x 3.63m	8' 2" x 11' 10"
Bathroom	1.79m x 2.04m	5' 10" x 6' 8"



Ground Floor

* Glazed doors optional extra



First Floor

The Pickstock Homes promise



YOUR NEW LIFESTYLE AWAITS

With a home at King's Moat you can be assured of the Pickstock Homes promise: quality guaranteed. Blending traditional exteriors with stylish and contemporary interiors, our homes offer the very best for modern family life.

King's Moat properties are low maintenance and highly efficient, built to the latest in building excellence standards. Pickstock Homes is registered with the NHBC (National House Building Council), which means that we follow strict regulatory compliance processes when building our homes. All properties come with a 10-year NHBC structural warranty and a 2-year Pickstock Homes warranty for added peace of mind.





Luxury as standard

SPECIFICATION

Pickstock Homes is proud to offer the very best internal specification on the current new homes market, with quality fixtures and fittings installed as standard. Finest attention to detail and exceptional finish are the trademarks of a Pickstock Homes property.

General

- NHBC Build Mark 10 year warranty
- Pickstock Homes 2 year warranty
- Worcester Bosch Boiler with 5 year warranty
- UPVC windows
- Brushed chrome accessories and doorbell
- TV point in lounge, family room and all bedrooms
- Wiring provided for homeowner's alarm system
- Dusk to dawn PIR sensor lighting to front and rear of the property
- One USB charge point to kitchen and master bedroom
- Downlights to kitchen, bathrooms and en suites. All other rooms have pendant lights
- Fitted wardrobe to master bedroom
- Oak handrails to staircase

Bathrooms, en suites and cloakrooms

- Vitra bath and chrome bath filler
- Vitra close-coupled WC
- Vitra pedestal basin with chrome basin mixer
- Full height tiling to bath and shower enclosure. Half wall tiling to cloakroom basin
- One shaving point per property
- Extractor fans in all bathrooms, en suites and cloakrooms

Kitchens

- Your choice of fully fitted kitchen
- Laminated worktops with the option to upgrade to Earthstone
- Upstands
- Glass splashback to hob – choose from a range of colours
- Stainless steel insert 1.5 bowl sink with mobile drainer
- Chrome Blanco Strand mono tap in kitchen
- Chrome Blanco Prinz level mixer tap in utility room (where applicable)
- Gas hob
- Zanussi integrated fridge freezer
- Stainless steel hood

2 & 3 bedroom properties

- Zanussi single oven

4+ bedroom properties

- Zanussi built-in double oven
- Zanussi integrated dishwasher

External

- Turf-planted front and rear gardens
- Wooden gates to side access
- 1.8M close board fencing to rear garden
- External tap





The finishing touch

OPTIONAL EXTRAS

Let us guide you through the optional extras to personalise your dream home. We offer design solutions for fitted wardrobes, tiles and carpets, and your choice of kitchen to make your home unique. Interiors are fitted to the highest quality standards before you move in, so that your house will feel like home from day one.

Kitchens

- Symphony Kitchens is our preferred supplier, chosen for its exceptional quality and wide range of modern and classic kitchens. Choose your own fully fitted kitchen with the option to upgrade to Earthstone worktops.

Flooring

- We offer ceramic or porcelain floor tiles in kitchens and bathrooms.
- Our design advisors will guide you through the options to help you choose the right carpet for your home.

Storage

- Fitted wardrobes are the ideal storage solution. We offer bespoke options to suit your needs and ensure that your bedrooms are calm and clutter free.

Please be advised that floor plans and illustrations are for guidance and illustrative purposes only and do not form part of any contract or warranty. Room sizes are approximate and may be subject to alterations. Every effort has been made to ensure that floor plans are as accurate as possible at the time of printing. Please ask a development sales advisor for details on specification and plot specific detail. Pickstock Homes reserves the right to vary detail without notice.

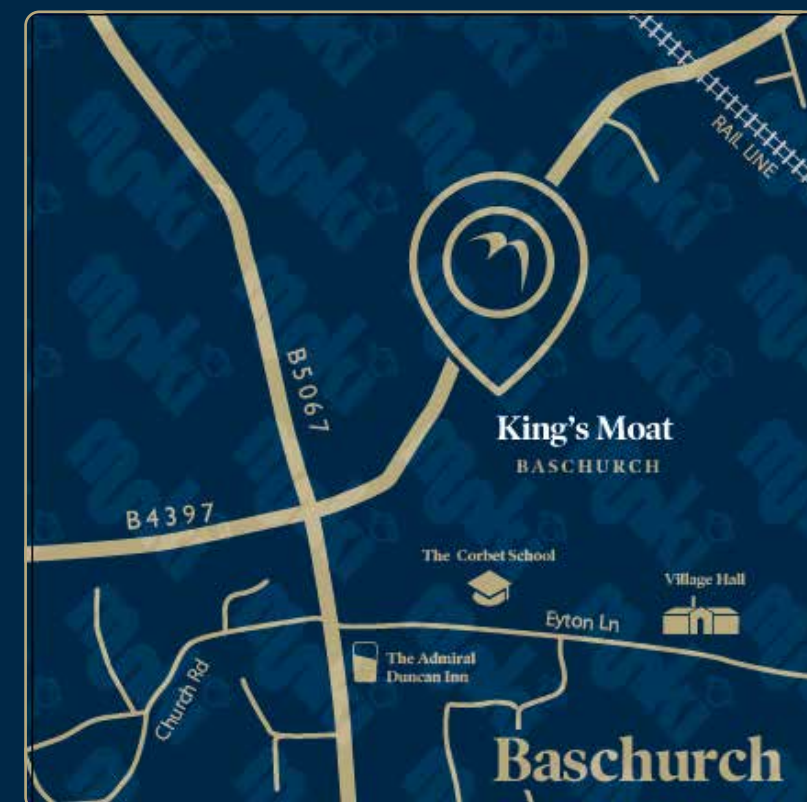
The Consumer Code came into force on 1 April 2010. This edition applies to all Reservations signed on or after 1 June 2019. It sets mandatory Requirements that all Home Builders must meet in their marketing and selling of Homes and their after-sales customer service. Home Builders must adopt the standards of good practice, procedures and information detailed in the Guidance against each Requirement, unless they take a different approach that also satisfies the Requirements. More advice is available on the Consumer Code website at www.consumercode.co.uk.





King's Moat

LOCATION MAP | SY4 2BB



INVITATION TO VIEW

For more information about any of our properties or to book a viewing, please contact the sales office on 01691 677940, email camilla@pickstockhomes.com or visit www.pickstockhomes.com



01691 677940

camilla@pickstockhomes.com

pickstockhomes.com